

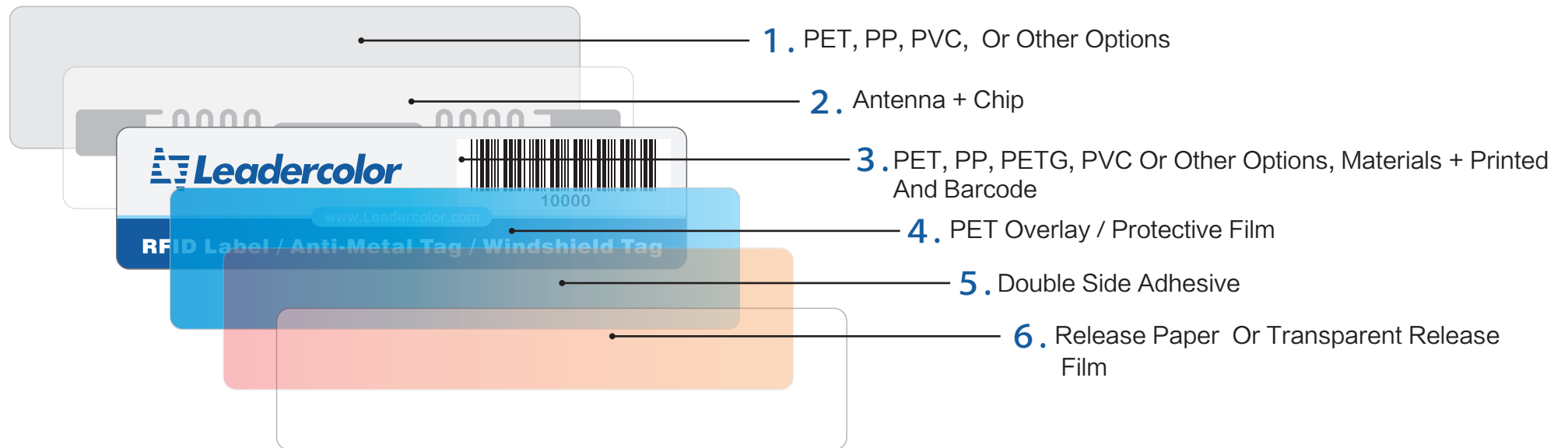


深圳名彩智能卡有限公司
Shenzhen Leadercolor Smart Card Co., Ltd.

产品说明 Product Description >>

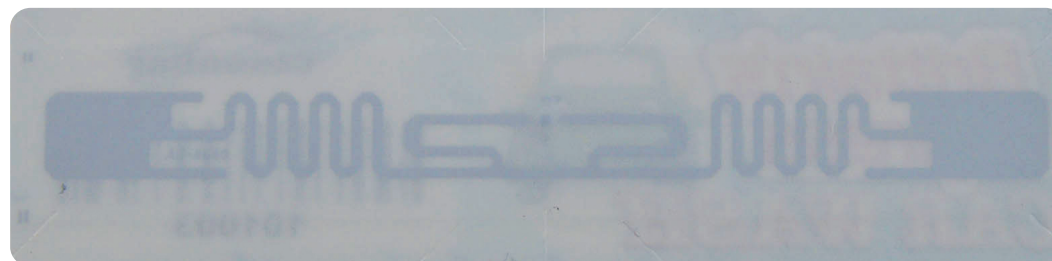
Product Name: Windshield RFID Tag

Item NO. : LDR10226



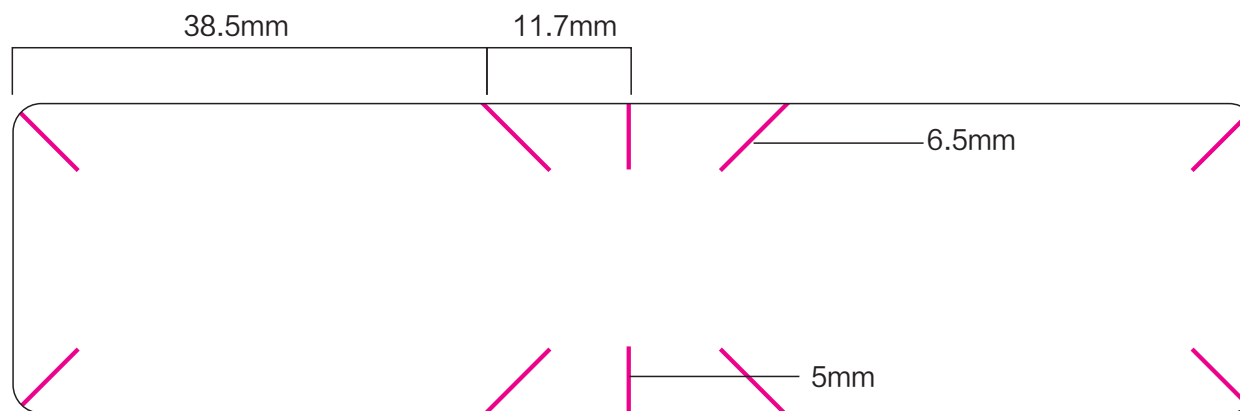
产品结构

Structure



产品实物图

Pictures



Size:102mm × 25mm

Structural description

1. Soft and high temperature resistance, waterproof and environmental friendly. The cover will protect RFID antenna and chip from the corrosion and oxidation of air, water, gasoline and other chemical products.
2. Antenna and chip. The smart RFID chip is used for payment and membership management, parking, intelligent community and so on.
3. For printing, and to protect RFID antenna and chip from the corrosion and oxidation of air, water, gasoline and other chemical products.
4. Protect the printed layer from corrosion of external chemicals, water, glue or other substances, and maintain the clarity of the printed pattern.
5. Made with matrical double-sided adhesive, waterproof, high temperature resistance, anti-sun and paste firmly.
6. Release paper (film) can keep the effectiveness of the glue before using.

This product is mainly used for the car windshield, membership management, payment, vehicle access management and other applications which can realize intelligence, convenience and practical.

Design is different from the ordinary label, it is easy to carry, excellent texture, waterproof, long lifespan and paste firmly.

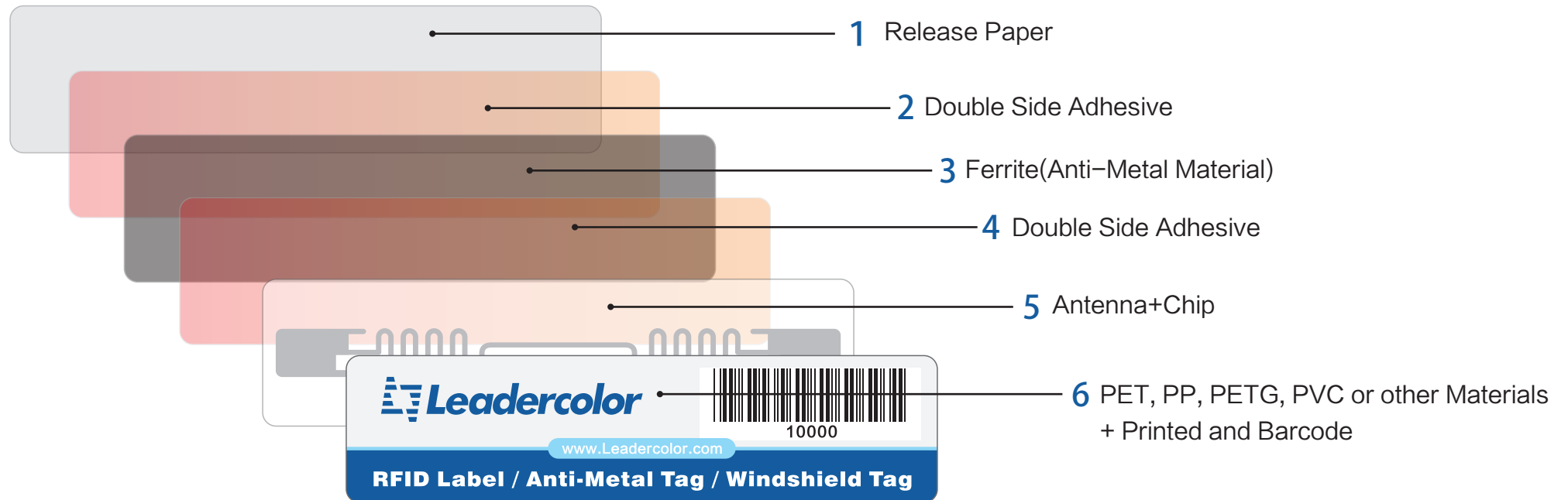
产品模切图

Product Die Cut Diagram

Note: black line is the tangent line (cut off), red color is the virtual knife line.

Product Name: Anti-Metal RFID Tag

Item NO. : LDR10236

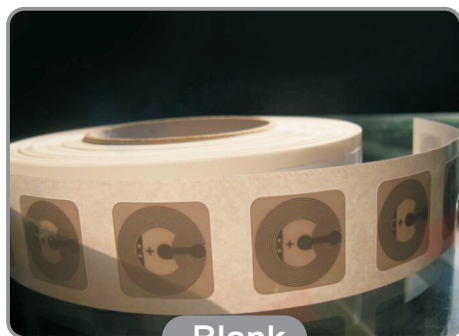


产品结构

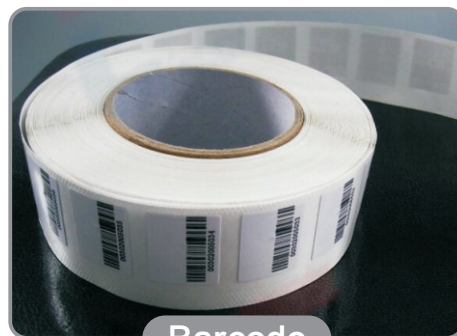
Structure

NFC RFID Tag

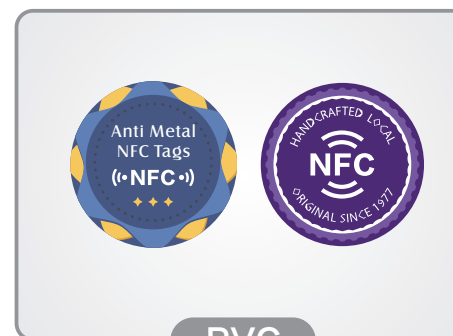
– Customized Function, Material and Craft



Blank



Barcode



PVC



PET



Tamper-proof

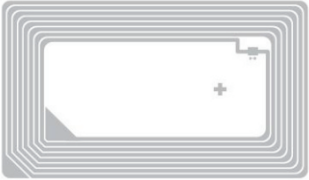


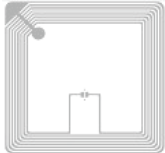

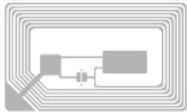


Anti-metal

Application:

- Check-in
- Access Control
- Mobile Payment
- Membership Management



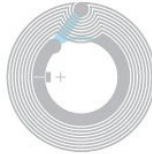

HF Inlay List

No.	Frequency	Product	Chip	Support Chips	Dry Inlay Dimension	Wet Inlay Dimension	Frequency Range	Shape	Normal Read Range
1	HF	45X76mm	ISO15693/ ISO14443A	NXP Ultralight/ FM1108 /ICODE SLI/ICODE SLI-X	45X76mm	85.5x54mm	13.8-14.2Mhz		4.5-8cm
2	HF	60X30mm	ISO15693	ICODE SLI /ICODE SLI-X	60X30mm	63X33mm	13.8-14.2Mhz		8-15cm
3	HF	52X15mm	ISO14443A /ISO15693	NXP S50/Ultralight/F08/ CODE SLI/ICODE SLI-X	52X15mm	55X18mm	13.8-14.2Mhz		3.5-5cm
4	HF	45X45mm	ISO15693	ICODE SLI/ICODE SLI-X	45X45mm	50X50mm	13.8-14.2Mhz		8-15cm
5	HF	40X40mm	ISO14443A	NXP S50/Ultralight/FM08/ Desfire 4k	40X40mm	45X45mm	13.8-14.2Mhz		3.5-8cm
6	HF	22.5X38mm	ISO14443A	NXP S50 /Ultralight/FM08	22.5X38mm	26x41mm	13.8-14.2Mhz		3.5-5.5cm

HF Inlay List

No.	Frequency	Product	Chip	Support Chips	Dry Inlay Dimension	Wet Inlay Dimension	Frequency Range	Shape	Normal Read Range
7	HF	11x26mm	ISO15693	ICODE SLI /ICODE SLI-X	11x26mm	15x30mm	13.8-14.2Mhz		2.5-4.5cm
8	HF	Φ25mm	ISO15693 /ISO14443A	NXP S50/Ultralight/FM08 /ICODESLI/ICODE SLI-X	Φ25mm	28mm	13.8-14.2Mhz		1.5-3cm
9	HF	Φ22mm	ISO14443A	NXP Ultralight/FM08	Φ22mm	25mm	13.8-14.2Mhz		1.5-2cm
10	HF	Φ21mm	ISO14443A	NTAG203	Φ21mm	25mm	14.2-14.5Mhz		1.5-3cm
11	HF	Φ20mm	ISO15693 /ISO14443A	NXP S50/Ultralight/F08/ I code sli/I code slx	Φ20mm	23mm	13.8-14.2Mhz		1.5cm

HF Inlay List

No.	Frequency	Product	Chip	Support Chips	Dry Inlay Dimension	Wet Inlay Dimension	Frequency Range	Shape	Normal Read Range
7	HF	Φ 30mm	ISO14443A	NXP S50/Ultralight/F08	Φ 30mm	33mm	13.8-14.2MHZ		4-5cm
8	HF	22x35mm	ISO15693	ICODE SLI/ICODE SLI-X	22x35mm	25x40mm	13.8-14.2MHZ		4-6cm
9	HF	Φ 33mm (CD label)	ISO15693 /ISO14443A	NXP S50/Ultralight/FM08/ I code sli/I code six	Φ 33mm	40x16mm	14.4-14.8Mhz (14443A)/ 13.8-14.2Mhz (ISO-15693)		3-6mm
10	HF	40x40mm	ISO14443A	NTAG216	40x40mm	45x45mm	13.8-14.2Mhz		2-5cm

Note:

1. Above antenna can produce label, paper card, coupon ticket and PVC Card (Can be customized based on Client's requirement)
2. Adhesive label material choice: coated paper, thermal paper, PP synthetic paper, PET, transparent PVC, Writing Paper
3. Sided adhesive choice: no basic material, PET, PP25 transparent adhesive, Cotton paper glue
4. Sheffed card / coupon ticket material choice: coated paper, thermal paper
5. Personalization process: UID Printing, Encoding, QRcode/Barcode printing



深圳名彩智能卡有限公司

Shenzhen Leadercolor Smart Card Co., Ltd.

地址: 广东省深圳市龙岗区横岗街道安兴路25号

电话: +86-755-89379456 89379391

邮箱: sales@Leadercolor.com

传真: +86-755-89379456 Ext 802

网址: // www.Leadercolor.com

Add: 25th Anxi Rd, Sajaolong Industrial,
Anlian Vilage Hengang Town,
Longgang District, Shenzhen China

Tel: +86 755 89379456 89379391

Fax: +86 755 89379456 Ext 802

Web: Http:// www.Leadercolor.com

Email: Sales@Leadercolor.com